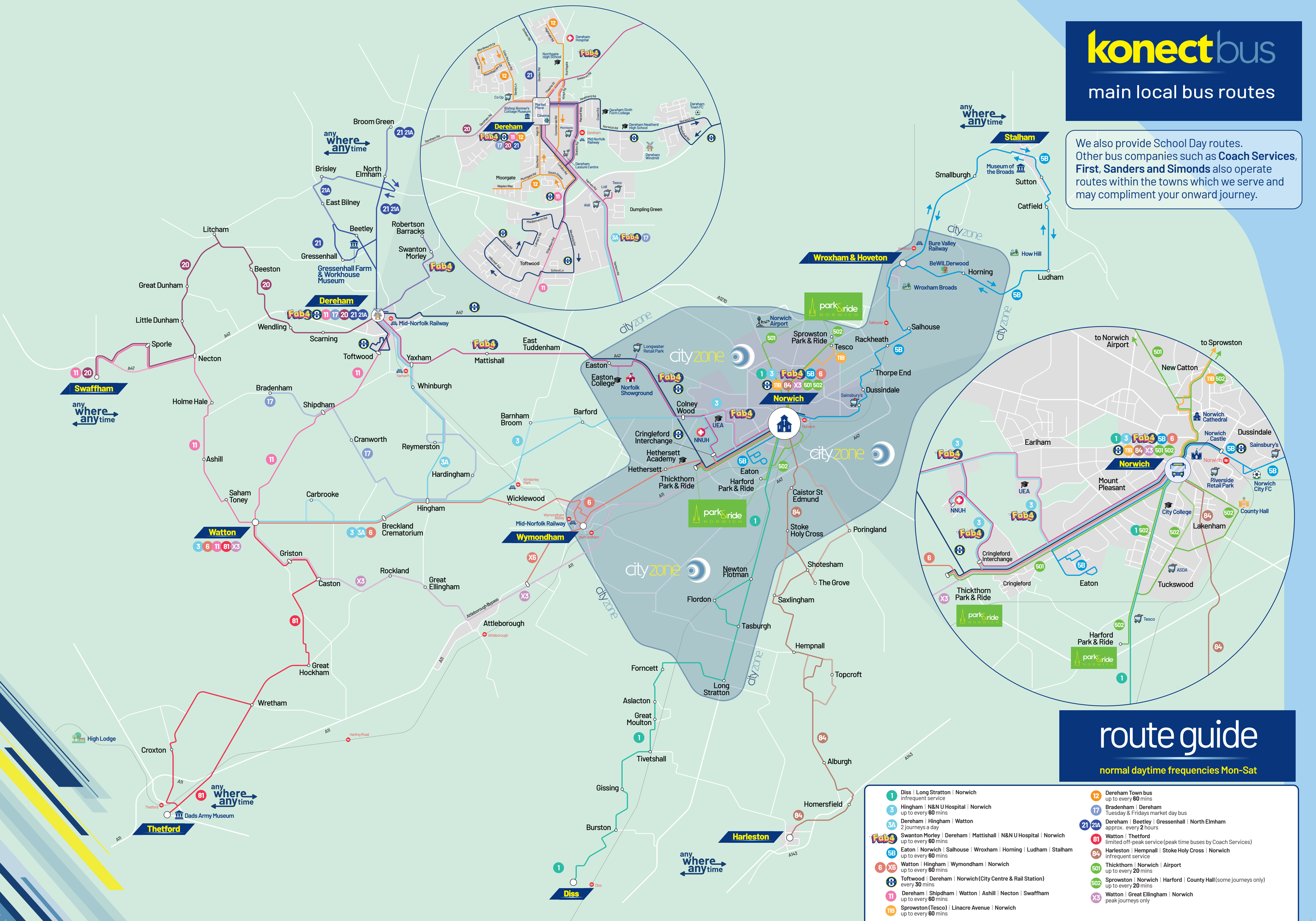


We also provide School Day routes. Other bus companies such as **Coach Services**, **First**, **Sanders** and **Simonds** also operate routes within the towns which we serve and may compliment your onward journey.



route guide

normal daytime frequencies Mon-Sat

- 1 Diss | Long Stratton | Norwich
infrequent service

3 Hingham | N&N U Hospital | Norwich
up to every 60 mins

3A Dereham | Hingham | Watton
2 journeys a day

Fab4 Swanton Morley | Dereham | Mattishall | N&N U Hospital | Norwich
up to every 60 mins

5B Eaton | Norwich | Salhouse | Wroxham | Horning | Ludham | Stalham
up to every 60 mins

6 X6 Watton | Hingham | Wymondham | Norwich
up to every 60 mins

8 Toftwood | Dereham | Norwich (City Centre & Rail Station)
every 30 mins

11 Dereham | Shipdham | Watton | Ashill | Necton | Swaffham
up to every 60 mins

11B Sprowston (Tesco) | Linacre Avenue | Norwich
up to every 60 mins
- 12 Dereham Town bus
up to every 60 mins

17 Bradenham | Dereham
Tuesday & Fridays market day bus

21 21A Dereham | Beetley | Gressenhall | North Elmham
approx. every 2 hours

81 Watton | Thetford
limited off-peak service (peak time buses by Coach Services)

84 Harleston | Hempsall | Stoke Holy Cross | Norwich
infrequent service

501 Thickthorn | Norwich | Airport
up to every 20 mins

502 Sprowston | Norwich | Harford | County Hall (some journeys only)
up to every 20 mins

X3 Watton | Great Ellingham | Norwich
peak journeys only