



**buildingkonections**

Sustainable Travel with **Konectbus** & **Norwich Park & Ride**

# Your ideal **sustainable** **travel** partner



# Travel is a core part of any business,

whether it be for face-to-face meetings, bringing employees to work or helping to build relationships between your clients and partners.

At **Konectbus**, we've been connecting communities for many years and during this time have worked with many local businesses to help them create and develop their sustainable business travel plans.

Whether you're looking for ways to internally promote sustainable travel, reduce your carbon footprint or simply save money on business travel expenses, we can support you.

We run buses, 7 days a week\* across Norwich City and many towns and villages covering South Norfolk, Breckland and Broadland to larger towns Dereham, Wymondham, Watton, Thetford and Wroxham.

Our **Park and Ride** service offers the convenience of four out of town car parks with frequent direct bus services linking dedicated bus lanes that allow congestion-free journeys into the heart of the city.



**konectbus**



# Let us help your business to:

- ▶ Find alternative ways to bring employees, clients, and partners to your business.
- ▶ Rethink how to travel by helping to reduce CO<sub>2</sub> and traffic congestion whilst potentially making a better use of travel time.
- ▶ Reduce the need for company vehicles by encouraging and directing employees to consider using the bus and other sustainable methods.



**1** full bus  
can take  
**75** cars off  
the road...



...reducing pollution and  
congestion



taking this journey would  
save **945g** of CO<sub>2</sub>  
compared to driving...

That's the same  
as making **400**  cups of tea!

# We can also work with you to:

- ▶ Help your business meet its climate change strategy.
- ▶ Promote flexible travel options to attract employees who may become car free.
- ▶ Potentially re-route services to connect with your business.



# What is the benefit to your businesses of encouraging car free travel?

- ▶ Reduced pressure on car parking.
- ▶ Allows employees, visitors and customers who don't drive to get to your businesses easily - 20% of all UK households don't have a car.
- ▶ Reduced traffic congestion in the local area.
- ▶ Reduce your need for pool cars.
- ▶ Improved reputation for sustainability amongst stakeholders and the local community.
- ▶ Corporate social responsibility (CSR) activities, such as encouraging sustainable travel, have many benefits from helping you win awards to improving staff morale.

# What are the benefits for your employees to travel by bus?

- ▶ Can make better use of their time when they are not having to drive.
- ▶ Don't have to struggle to park around their place of work.
- ▶ Arrive less stressed having avoided driving through heavy traffic.
- ▶ No expenditure on fuel, parking, or car maintenance.
- ▶ Reduced fares on bus travel.
- ▶ No worries about parking fines or being caught by speed cameras.

# Exclusive offers for your business

## NEW EMPLOYEE TRAVEL SAVER SCHEME

To help encourage sustainable travel amongst your employees, we're offering **4 weeks FREE bus travel** for any new employee who joins your company on a permanent contract.

Find out more about this offer on our website.

[konectbus.co.uk/anywherene](https://konectbus.co.uk/anywherene)

## Club konections

Receive **10% off** an annual ticket with Norwich Park and Ride and Konectbus\*

Join Club Konections and share **discounted travel** with your employees.

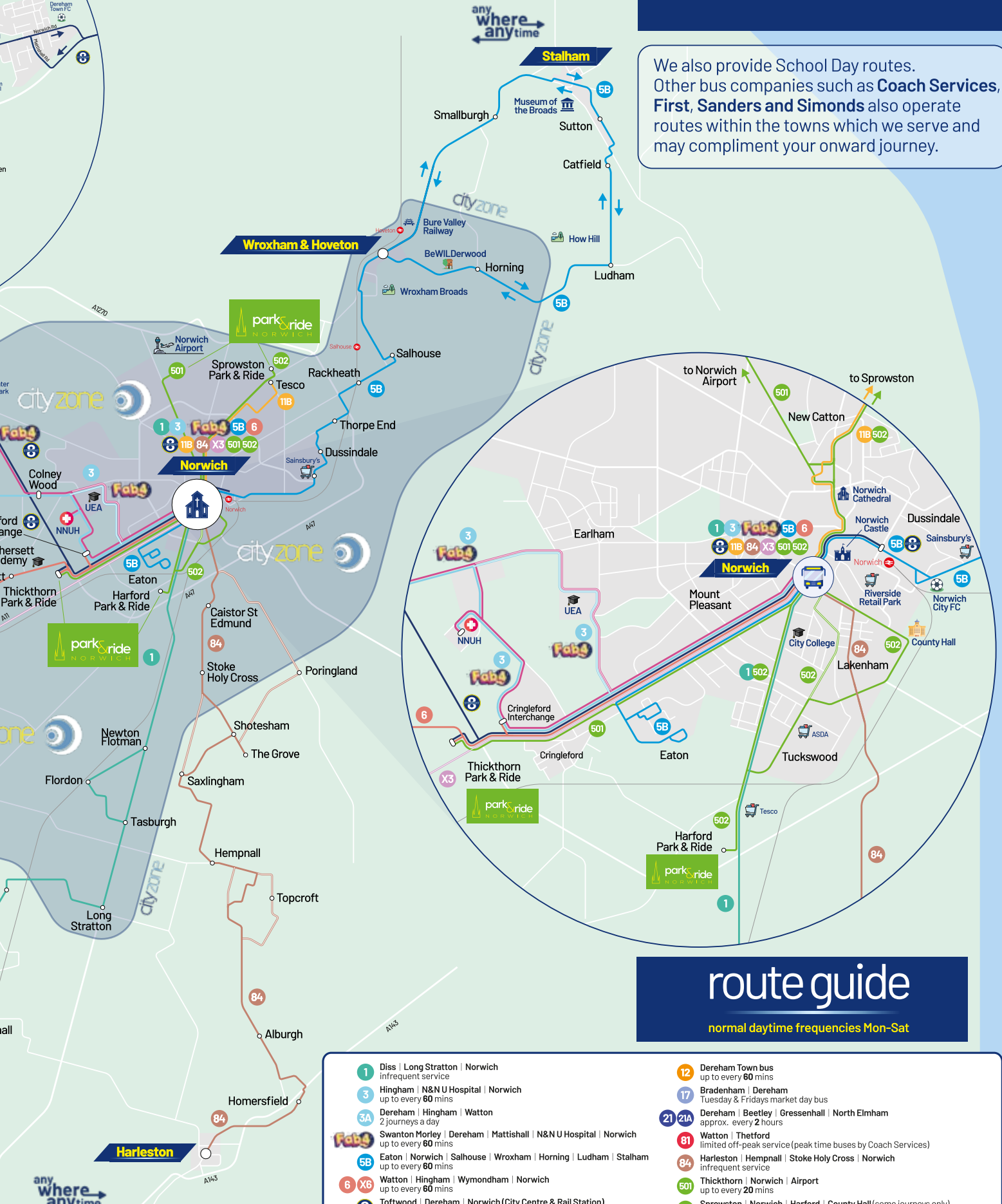
Find out more about this offer on our website.

[konectbus.co.uk/clubkonections](https://konectbus.co.uk/clubkonections)





We also provide School Day routes. Other bus companies such as **Coach Services, First, Sanders and Simonds** also operate routes within the towns which we serve and may compliment your onward journey.



## route guide

normal daytime frequencies Mon-Sat

- 1** Diss | Long Stratton | Norwich infrequent service
- 3** Hingham | N&N U Hospital | Norwich up to every 60 mins
- 3A** Dereham | Hingham | Watton 2 journeys a day
- Fab4** Swanton Morley | Dereham | Mattishall | N&N U Hospital | Norwich up to every 60 mins
- 5B** Eaton | Norwich | Salhouse | Wroxham | Horning | Ludham | Stalham up to every 60 mins
- 6 X6** Watton | Hingham | Wymondham | Norwich up to every 60 mins
- 8** Toftwood | Dereham | Norwich (City Centre & Rail Station) every 30 mins
- 11** Dereham | Shipdham | Watton | Ashill | Necton | Swaffham up to every 60 mins
- 11B** Sprowston (Tesco) | Linacre Avenue | Norwich up to every 60 mins
- 12** Dereham Town bus up to every 60 mins
- 17** Bradenham | Dereham Tuesday & Fridays market day bus
- 21 21A** Dereham | Beetley | Gressenhall | North Elmham approx. every 2 hours
- 81** Watton | Thetford limited off-peak service (peak time buses by Coach Services)
- 84** Harleston | Hempnall | Stoke Holy Cross | Norwich infrequent service
- 501** Thickthorn | Norwich | Airport up to every 20 mins
- 502** Sprowston | Norwich | Harford | County Hall (some journeys only) up to every 20 mins
- X3** Watton | Great Ellingham | Norwich peak journeys only

any where any time

# Fabulous, flexible ticket options

However your employees choose to travel, we offer a vast range of tickets to match their needs.

Flexible ticket bundles for shared homeworking, great savings on longer term ticket options and touch free ways to pay with contactless, capped fares and mobile tickets options.



Our **Anywhere, Anytime** commuter tickets allow travel **Anywhere** on our buses right across our Konectbus and Norwich Park and Ride network.

From the date you first activate your ticket, Anywhere, Anytime offers you greater flexibility. Commute, browse the shops, or catch up with family and friends. **Only available to buy on our new app.**

[konectbus.co.uk/anywhereanytime](https://konectbus.co.uk/anywhereanytime)



An affordable and convenient way to commute into Norwich. Ideal for those who live within the city suburbs.

[konectbus.co.uk/cityzone](https://konectbus.co.uk/cityzone)

Travel direct from Toftwood/ Dereham to Norwich City Centre, then onto the Rail Station. Perfect for those who need to make train connections to London and across East Anglia.



[konectbus.co.uk/straight8](https://konectbus.co.uk/straight8)

Great connections from Watton to Norwich including Wymondham, Norfolk and Norwich Hospital and the UEA (on some journeys).



[konectbus.co.uk/3-6](https://konectbus.co.uk/3-6)





Make the road back to work easier with **Norwich Park and Ride** and arrive in the city, less stressed than commuting by car.

Running up to every 20 minutes from Norwich Airport, Thickethorne (route 501) and Harford and Sprowston (route 502) enjoy a faster, reliable and more sustainable route into the city by car. Easily accessible to all main roads into Norwich and it's FREE to park. Choose from a range of flexible commuter tickets, then sit back and enjoy a little "me" time on the way to work.

[konectbus.co.uk/norwich-park-ride](http://konectbus.co.uk/norwich-park-ride)

## For easy touch free travel - Tap, Tap, Go



Tap into the city, Tap out as you head home. Perfect for those who commute into the city all week or on several consecutive days a week. No need to wait for a paper ticket or change.

[konectbus.co.uk/tap-tap-go](http://konectbus.co.uk/tap-tap-go)

# The Konectbus App

A faster, secure and easier way to travel by bus



Download on  
iOS and Android  
devices now!



# NORWICH TOGETHER



At **The Norwich Together Alliance**, we don't believe that feeling lonely should define you. Or that you should have to fight it alone.

That's why we've brought together many local businesses and organisations who have developed their own projects to tackle the urgent problem of loneliness in Norwich. Making it easier for them to reach out to anyone who may need their help.

So if you're looking for ways your business can get involved and help to tackle loneliness in the community, why not get in touch and we'll take it on together.

Contact Tracey Drake, Local Development Lead on 07843336487 or email [tracey.drake@bitc.org.uk](mailto:tracey.drake@bitc.org.uk)

## CREATING A CITY FULL OF CONNECTIONS

**NORWICH  
TOGETHER**

The logo for ChattyBus is a speech bubble with a yellow-to-orange gradient border and a teal-to-cyan gradient fill. The text "ChattyBus" is written in a white, bold, sans-serif font inside the bubble.

## ChattyBus

**Chatty Bus Norwich** began when volunteers, known as the “Chatty Bus Champions”, representing local business and organisations within the Norwich Together Alliance, boarded our buses on a spring day in Norwich in 2020. Their aim was to encourage conversations amongst our passengers and help to tackle loneliness and reduce social isolation across Norfolk.

The following week, the Government announced a national lockdown.

Everyone were told to keep their distance, wear a mask, and only travel for essential journeys.

Social isolation and loneliness became even more pertinent during this time but throughout the pandemic we continued to keep communities connected, running our bus services for key workers, and the businesses of the Norwich Together Alliance continued to work hard to deliver many ways to keep people connected.

We've connected with the Age UK Befriending Scheme to launch Virtual Chatty Bus, hosted Meet for a Mardle on Norfolk Day, Let's Talk Norwich outside the Forum, took a host of mental health and wellbeing services to the UEA and recently launched our Chatty Bus discount card. Collectively we are bringing the wide range of services of the Norwich Together Alliance members to the attention of our local community...

**BUT** our journey has not stopped, in fact it is continuing to grow, and we encourage your business to come on board and keep things moving!



**buildingkonections**

Sustainable Travel with **Konectbus** & **Norwich Park & Ride**

## Start your next journey with us!

Whether you're looking for ways to internally promote sustainable travel, reduce your carbon footprint or simply save money on business travel expenses, we can support you in doing just that!

Get in touch for a chat with one of our colleagues today.  
Email [feedback@konectbus.co.uk](mailto:feedback@konectbus.co.uk) to book an appointment.

**konect**bus

